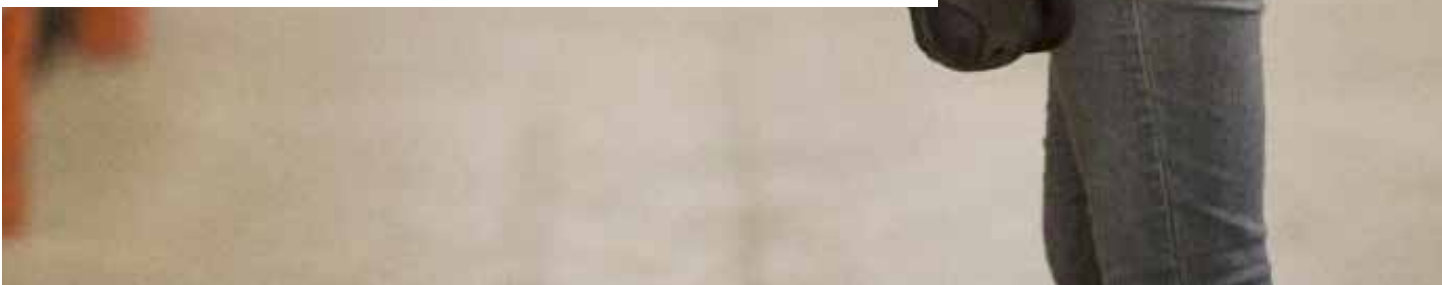




Android in Warehousing

**ENHANCE THE SPEED AND ACCURACY OF YOUR
WAREHOUSE OPERATIONS USING ZEBRA FOR ANDROID**



The Challenge:

A WAREHOUSE THAT MEETS TODAY'S EXPECTATIONS

Customer expectations are transforming warehouse operations. Speed is now more critical than ever. Inventory needs to turn around quickly as retailers and manufacturers try to keep up with our modern 'need it now' culture.

Accuracy is also paramount. Nothing less than complete order accuracy with fully visible tracking will do, if you want to retain your customers and reputation.

Of course, there will always be the traditional challenges, too. Peak times such as Black Friday and Christmas require seasonal workers who need to be trained up and on the job in very short timescales.

Zebra for Android can help you tackle these issues simply, from day one. Firstly, because Android and other touch-screen operating systems dominate modern phones, your workers already know how to use its intuitive touch screen interface. Secondly, Zebra for Android includes the option of Mobility DNA All Touch Terminal Emulation, which converts your existing green screen applications into Android touch screen experiences, so workers at all levels can adopt them quickly.

This easy starting point opens the gates to improved efficiencies and turnaround times through some impressive innovations.

The Solution:

CREATING NEW EFFICIENCIES WITH ZEBRA FOR ANDROID

When it comes to utilizing Android, only Zebra Technologies can help you take full advantage, as we offer the largest choice of devices, the right level of security, and the most flexible level of customization.

For example, the same device can be used throughout all four stages of receiving, put away, picking and shipping. Different keyboards appear depending on context (e.g. numeric for picking) and larger buttons are displayed if the user wears gloves.

Turnaround times are also reduced through new Mobility DNA apps such as SimulScan, which can capture an entire document and automatically populate your existing systems – quickly and accurately, in a single tap.

Zebra for Android devices have been fortified with extra security in the form of our own Mobility Extensions. They're built to withstand knocks, drops, splashes and dust – to continue scanning barcodes in practically any condition, scanning documents, taking photos, and transmitting signatures back to the main database. And you can always rely on Zebra support services for technical advice and rapid repairs.

The world's most complete Android range for the warehouse



The **MC3200** mobile computer is the next generation in the class-leading MC3000 Series, now with more options to meet your needs. Three lightweight models – brick, gun and turret – bring all day comfort to every task – from cycle counting to putaway, replenishment and voice-directed picking.



The **MC9200** is the next generation in the MC9000 Series, and has been the industry's gold standard for mobility in inventory and asset management in the most demanding environments – from the warehouse floor to the dock door. The proven rugged design enables workers to deliver reliable performance through tasks such as inventory, asset & process management, despite everyday drops on concrete, sub-zero cold, extreme heat, dust and exposure to splashing liquids.



The new **TC8000** mobile computer is the latest in its class (launched in 2016), and was designed from the ground up to increase worker productivity by 14%. Its innovative design minimizes the need to 'tilt and verify' enabling workers to more efficiently manage everyday processes such as; warehouse management, truck unload/load, pick/put away, replenishment, packing and shipping.



The new **WT6000** (launched in 2016) brings unparalleled comfort to hands-free mobility. It's smaller and lighter than other wearables on the market and its industrial rugged design delivers maximum uptime in your most demanding environments. By combining the hands-free mobility of wearable technology with one-of-a-kind features like tap to pair capabilities, Zebra's Total Wearable Solutions provide the operational flexibility needed to replace complexity with productivity.

The Mobility DNA solution TekSpeech Pro 4 allows you to marry speech with all the capabilities of your Zebra for Android device, turbo charging efficiency. You can easily create applications with Workflow Builder to streamline virtually every warehouse process – so your devices are more fully utilized, improving your return on investment.

These workhorses are further enhanced on the inside with Mobility DNA – Zebra's own genetic code that gives our Android mobile computers distinct enterprise capabilities. Its unique software ecosystem transforms Android into an enterprise-ready force – making operations a powerhouse of productivity, management simpler, and integration problem-free.

Mobility DNA Components

<p>TEKSPEECH PRO</p> <p>Listen, Speak, Read, Type, Scan, for Voice-Directed Workflows.</p> <p>Allows workers to simply listen to prompts on where to go, with the option to speak to the host system to verify the workflow is for them.</p>	<p>WT6000 / TC8000</p> <p>Across the warehouse floor the ability to talk directly with operatives at any stage of the process.</p> <p>TekSpeech Pro enables efficient communication in time critical situations. Both devices feature this, in addition to their other data capabilities, enabling operatives to work from one device.</p>
<p>WORKFORCE CONNECT PTT EXPRESS</p> <p>The fast, easy, cost-effective way to enable push-to-talk communications among multiple devices.</p>	<p>All Zebra for Android devices</p> <p>Enable quick resolution throughout the warehouse by contacting co-workers or managers via the two-way radio functionality.</p>
<p>SIMULSCAN</p> <p>Capture multiple barcodes or entire forms in a single scan. Business applications are fully populated – instantly and accurately.</p>	<p>All Zebra for Android devices Extra functionality through camera with the TC8000</p> <p>Increase the speed and accuracy of data collection across the warehouse floor by enabling operatives to capture multiple barcodes in one scan.</p> <p>Devices with a camera can capture the contents of an entire form, including text fields, phone numbers, images, signatures, and even check boxes.</p>
<p>ALL TOUCH TERMINAL EMULATION</p> <p>Automatically converts existing “green screen” apps into an intuitive all-touch experience.</p>	<p>All Zebra for Android devices</p>
<p>SWIPE ASSIST</p> <p>The convenient way to capture data on all touch android devices. Allows users to create and place a virtual data capture button on the screen of their mobile computer.</p>	<p>All Zebra for Android devices</p>
<p>ENTERPRISE KEYBOARD</p> <p>Quickly access alternative keyboards with flick gesture to improve typing accuracy. Available with auto correction.</p>	<p>All Zebra for Android devices</p>



FIND OUT MORE ABOUT HOW ZEBRA FOR ANDROID DEVICES CAN ENHANCE THE SPEED AND ACCURACY OF YOUR WAREHOUSE OPERATIONS AT [ZEBRA.COM/ANDROID](https://www.zebra.com/android)

Alternatively, to discuss your needs in more detail, contact Zebra using the details below.



NA and Corporate Headquarters | +1 800 423 0442 | inquiry4@zebra.com