



ZEBRA EAI ACCELERATOR PROGRAM

DATA IS THE NEW REALITY

Zebra is leading the development of intelligent, enterprise-level solutions that provide unrivaled visibility into what is happening in customer environments and recommending the next best move or action. Our vision is to mobilize operational data from devices, analyze it and drive smarter, faster workflow decisions by users anywhere, any time.




THE EAI ACCELERATOR TIMELINE	
July 31, 2017	Application window opens
August 25, 2017	Application window closes
September, 2017	Participant announcement
October, 2017	Program begins

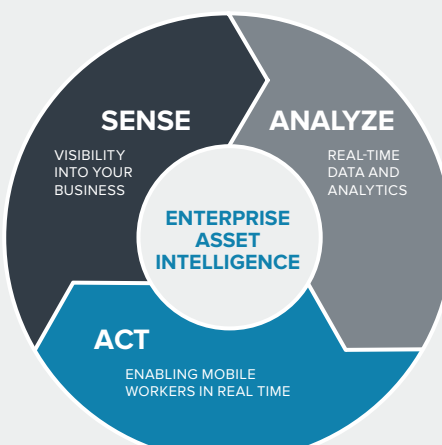
We call our vision Enterprise Asset Intelligence (EAI), or the digital transformation of the enterprise. We're taking that vision to the next level by igniting a new wave of innovation that will pave the way to EAI and enable infrastructure and processes that make IoT activities more meaningful. Our goal is to create a new stream of Intelligent Enterprise solutions that harness the power of data to help businesses improve productivity, reduce expenses and increase opportunities for sustainable growth. And you're invited to join us.

The Future is Intelligent Apps

The accelerating convergence of mobility, IoT and cloud computing—coupled with the ability to place sensors and computing devices virtually anywhere—has created an enormous opportunity to gather intelligence that can improve visibility across the enterprise. Enterprises are seeking ways to use this edge data to better manage their businesses, streamline operations and empower their workforces.

As a leader in the digital transformation of the enterprise, Zebra is developing intelligent infrastructure, tools and applications for its range of enterprise devices. As such, we're well positioned to accelerate the evolution from at-the-edge devices to the creation of new solutions that truly transform the workplace. We are seeking the right technology innovators to work with us to create new applications for the Intelligent Enterprise. Together we will open new markets and business opportunities that enable growth.

 <p>SMARTER DEVICES</p>	 <p>SMARTER INFRASTRUCTURE</p>	 <p>SMARTER THINGS</p>
<p>Device data including battery status, device connectivity, application availability, device location and user accessibility.</p>	<p>Data from physically installed infrastructure located in warehouses, loading docks, retail stores, sporting events or anywhere data can be aggregated.</p>	<p>Smart interconnected things give visibility into the identification, location and condition of products, assets, transactions and people.</p>



SENSE
VISIBILITY INTO YOUR BUSINESS

ANALYZE
REAL-TIME DATA AND ANALYTICS

ACT
ENABLING MOBILE WORKERS IN REAL TIME

ENTERPRISE ASSET INTELLIGENCE

THE INTELLIGENT ENTERPRISE FRAMEWORK

- **SENSE:** Solutions automatically “sense” information from enterprise assets, such as packages moving through a supply chain, equipment in a factory, workers in a warehouse, and shoppers in a store.
- **ANALYZE:** Operational data from these assets, including status, location, utilization, or preferences, is then “analyzed” to provide actionable insights.
- **ACT:** These insights can then be mobilized to the right person at the right time so they can be “acted” upon to drive better, more timely decisions by users anywhere, at any time.

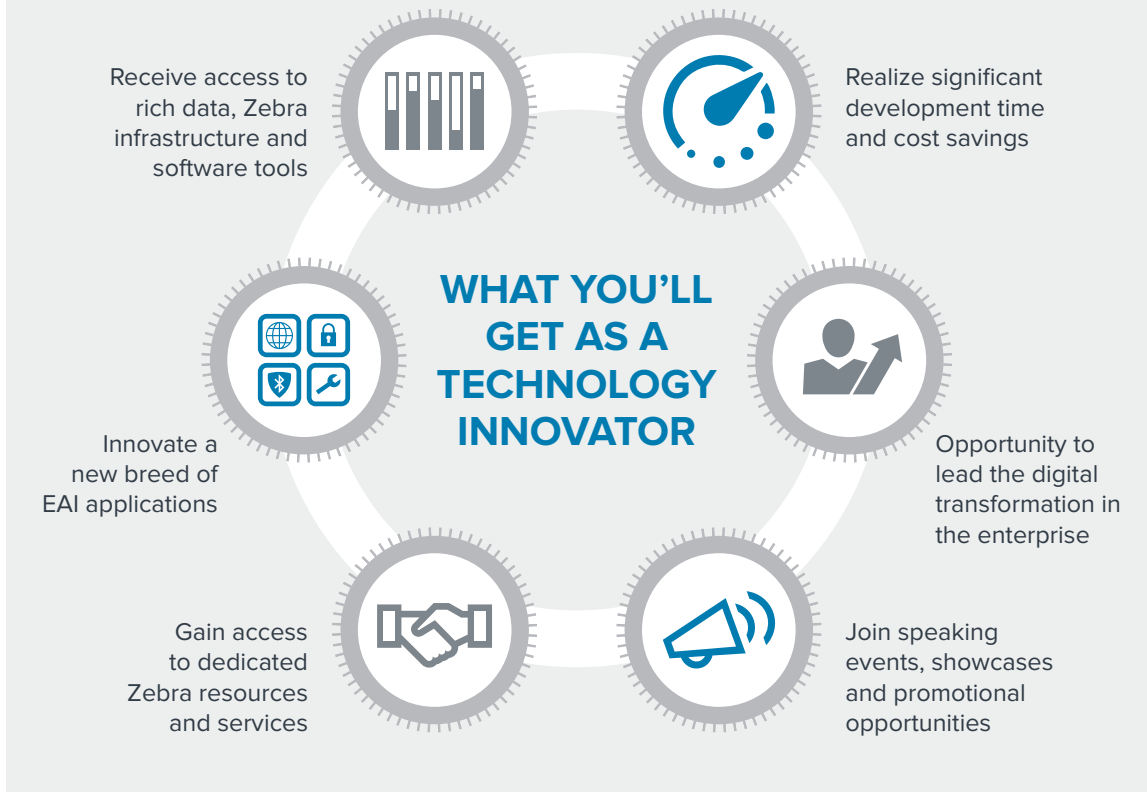
Introducing the Zebra EAI Accelerator

Zebra is laying the groundwork for innovations that will enable the Intelligent Enterprise with our new EAI Accelerator Program, a revolutionary new technology incubator that brings together application developers and designers with Zebra technologists and product leaders. This new program is designed to build applications that fundamentally change the way enterprises work. And you're invited to apply to become part of the program.

The EAI Accelerator is an opportunity to participate in our journey to deliver and monetize your own business solutions through data-driven insights. The program will select technology innovators who will receive access to edge-level datasets, APIs and Zebra developer and technical resources to power their applications. Access to the data that we are collecting from devices, things and environments will enable developers to identify and create new intelligent applications that add more value for customers and generate more revenue for you.

EXPAND YOUR PRESENCE IN THE ENTERPRISE MARKET WITH POWERFUL INFORMATION

As a participant in the Zebra EAI Accelerator, you will have an opportunity to get in on the ground floor of Zebra's EAI vision and be a part of history.



SAMPLE DATA SETS

HANDHELD COMPUTER AND TABLET
Status ID
OS/Version Data
Network/Time Zone
Memory Statistics
Location Data
Battery Usage and Charging Info
Service Records
Application Usage History
Gateway Functionality

PRINTERS
Status ID
Version Data
Network/Time Zone
Odometers
Temperature
Settings
Print Jobs
Cloud Printing

RFID READERS
Status ID
Version Data
LLRP Command Subset
Tag Detects/ID

SCANNERS
Status ID
OS/Version Data

SENSORS
Location
Temperature
Humidity
Accelerometer

DEVICE INFORMATION, FUNCTIONS, ACTIONS, OPERATIONS, LOCATIONS

Success Demands the Right Partners

Zebra is committed to the successful introduction of intelligent applications and is seeking talented application developers to join the EAI Accelerator Program. As you contemplate becoming part of the EAI Accelerator, ask yourself these questions:

- Do you have a vision about how edge data can transform the enterprise?
- Are you passionate about the value of data?
- Do you have a concept that you're ready to propose and co-develop with Zebra?
- Are you willing to take on some of the risk by investing in your concept?
- Is your solution or application willing to take edge level and intelligent data to transform workflows?
- Have you already been leveraging the data you collect for business intelligence and data analytics?
- Are you prepared to be clear about what you expect (and don't expect) from Zebra?
- Will you work with Zebra to finish the design of the EAI Accelerator Program?

If you are looking for a unique challenge and are willing to invest time and resources to experience the difference that intelligent data can make in your applications, take the next step and complete the EAI Accelerator Program application today.

INTELLIGENT SOLUTIONS ALREADY IN THE MARKETPLACE

Zebra is leading the way in bringing intelligent applications to market.



SmartPack Trailer

The Zebra SmartPack solution suite brings Zebra's EAI vision to the loading dock, providing transportation carriers with the real-time insights they need to run their operations more efficiently. It draws actionable insights from data provided by 3D sensors and camera technology from the edge of the dock door, allowing organizations to eliminate wasted space and time.



SmartLens for Retail

SmartLens is an EAI offering for retail that delivers deeper visibility into retail operations, providing better insights and enabling smarter decisions. It provides retailers with the ability to sense, analyze and take the right real-time actions to increase sales, enable successful omnichannel operations and reduce shrinkage and operational costs.

Apply to join the Zebra EAI Accelerator Program today, visit www.zebra.com/accelerator



NA and Corporate Headquarters
+1 800 423 0442
inquiry4@zebra.com

Asia-Pacific Headquarters
+65 6858 0722
contact.apac@zebra.com

EMEA Headquarters
zebra.com/locations
mseurope@zebra.com

Latin America Headquarters
+1 847 955 2283
la.contactme@zebra.com